

DEDDF RHEOLI TRAFNIDIAETH FFYRDD 1984
ADRAN 16(A) FEL Y'I DIWYGIWYD GAN DDEDDF TRAFNIDIAETH
FFYRDD (CYFYNGIADAU DROS DRO) 1991

GORCHYMYN CYNGOR GWYNEDD,
DIGWYDDIADAU ARBENNIG (RAS FEICIO "WOMEN'S TOUR OF BRITAIN 2018")
(RHEOLAETH TRAFNIDIAETH DROS DRO) 2018

RHODDIR DRWY HYN RYBUDD fod Cyngor Gwynedd yn bwriadu gwneud Gorchymyn er mwyn galluogi i Ras Feicio "Women's Tour of Britain" 2018 gymryd lle.

Effaith y Gorchymyn fydd Gwahardd unrhyw berson rhag peri i unrhyw gerbyd gan gynnwys beiciau pedal anawdurdodedig fynd mewn unrhyw gyfeiriad ar hyd y darnau hynny o'r ffyrdd a adwaenir isod rhwng yr oriau 6.00 y bore hyd at 6.00 yr hwyr ar y 17^{fed} o Fehefin 2018

- 1) Sgwâr Eldon, Ffordd Y Felin, a Phorth Canol yn Nolgellau.
- 2) Heol Y Bont yn Nolgellau gan deithio mewn cyfeiriad gogleddol ar hyd y ffordd dosbarth III Ffos Y Felin hyd at ei chyffordd gyda'r Ffordd Ty'n y Coed.
- 3) Ffordd Ty'n Y Coed o'i chyffordd gyda'r ffordd Ffos y Felin mewn cyfeiriad gogledd gorllewinol hyd at ei chyffordd gyda'r ffordd yr A470 yn Nolgellau.
- 4) Yr A470 o'i chyffordd gyda ffordd Ffos y Felin Dolgellau mewn cyfeiriad gogledd gorllewinol hyd at y cylchfan yn Llanelltyd.
- 5) Yr A496 o'r cylchfan yn Llanelltyd mewn cyfeiriad de gorllewinol i Abermaw ac yna mewn cyfeiriad gogledd dwyreiniol drwy Lanaber, Dyffryn Ardudwy, Llanbedr, Llanfair hyd at ei chyffordd gyda'r ffordd B4573 ochr deheuol i Harlech.
- 6) Ffordd Dosbarth II B4573 ochr deheuol i Harlech mewn cyfeiriad gogledd dwyreiniol hyd at ei chyffordd gyda'r ffordd Dosbarth I yr A496.
- 7) Ffordd Dosbarth I yr A496 o'i chyffordd gyda'r ffordd y B4573 mewn cyfeiriad gogledd dwyreiniol hyd at ei chyffordd gyda'r ffordd yr A487 ger Maentwrog.
- 8) Yr A487 o'i chyffordd gyda'r ffordd yr A496 mewn cyfeiriad gogledd gorllewinol hyd at ei chyffordd gyda'r ffordd Dosbarth II B4410.
- 9) Y B4410 o'i chyffordd gyda'r ffordd yr A487 mewn cyfeiriad gogledd gorllewinol hyd at ei chyffordd gyda'r ffordd Dosbarth I yr A4085 ger Garreg.
- 10) Yr A4085 o'i chyffordd gyda'r ffordd y B4410 mewn cyfeiriad gogledd dwyreiniol ac yna gogledd gorllewinol hyd at ei chyffordd gyda'r ffordd Dosbarth I yr A498 ger Nantmor.
- 11) Yr A498 o'i chyffordd gyda'r ffordd A4085 mewn cyfeiriad gogledd dwyreiniol drwy Feddgelert hyd at ei chyffordd gyda'r ffordd Dosbarth I yr A4086 ger gwesty Pen y Gwryd, Pen y Pass Llanberis ac yna'r ffordd yr A4086 mewn cyfeiriad gogledd dwyreiniol hyd at ffin Sir Gwynedd. Bydd y ras yn dilyn y ffyrdd drwy Sir Gwynedd hyd at ei ddiwedd ym Mae Colwyn.

Bydd y ffyrdd yn cael eu cau gan yr Heddlu rhwng yr oriau hyn ar sail dreigl pan fo'r digwyddiad yn cyrraedd pob ardal.

Mae angen y Gorchymyn er mwyn galluogi i Ras Feicio "Women's Tour of Britain 2018" gymryd lle. Hyrwyddwr y Gystadleuaeth yw Sweet Spot.

Ni fydd y Gorchymyn yn atal mynediad i gerddwyr ar unrhyw adeg i'r eiddo a leolir ar neu ger unrhyw ffordd mae'r gorchymyn yn ymwneud ag o, neu i unrhyw eiddo y gellir ond cael mynediad iddo gan gerddwyr o ffordd o'r fath.

Daw'r Gorchymyn i rym ar ddydd Sul y 17^{fed} o Fehefin 2018 a bydd yn parhau mewn grym rhwng 6.00 y bore hyd at 6.00 yr hwyr.

DYDDIEDIG: 14^{eg} o Fehefin 2018



.....
Iwan G. D. Evans, LLB (Anrh) PG.Cert. Dip.L.G
Pennaeth Gwasanaethau Cyfreithiol

Swyddfa'r Cyngor, Stryd y Jêl, CAERNARFON, Gwynedd.

Am fwy o wybodaeth ynglŷn â'r uchod ffoniwch y Gwasanaeth Trafnidiaeth a Gofal Stryd ar (01286) 679356 (CAT-23279GT)

**ROAD TRAFFIC REGULATION ACT 1984
SECTION 16(A) AS AMENDED BY THE ROAD TRAFFIC
(TEMPORARY RESTRICTIONS) ACT 1991**

**THE GWYNEDD COUNCIL,
SPECIAL EVENTS ORDER (“WOMEN’S TOUR OF BRITAIN 2018” CYCLING EVENT)
(TEMPORARY TRAFFIC MANAGEMENT) 2018**

NOTICE IS HEREBY GIVEN that the Gwynedd Council intend to make an Order to enable the “Women’s Tour of Britain” 2018 Cycling Event to take place.

The effect of the Order will be to prohibit any person from causing any vehicle including unauthorised bicycles to proceed in any direction along those lengths of roads as listed below between the hours between 6.00 a.m. until 6.00 p.m. on the 17th June 2018:-

- (1) Eldon Square, Smithfield Street and Finsbury Square, Dolgellau.
- (2) Bridge Street, Dolgellau travelling in a northerly direction along the Class III road Ffos y Felin to its junction with Ty’n y Coed road.
- (3) Ty’n y Coed road from its junction with the Ffordd y Felin road in a north westerly direction to its junction with the A470 road at Dolgellau.
- (4) The A470 road from its junction with the Ffos y Felin Road, Dolgellau in a north westerly direction to the roundabout at Llanelltyd.
- (5) The A496 road from the roundabout at Llanelltyd in a south westerly direction to Barmouth and continuing in a north easterly direction past Llanaber, Dyffryn Ardudwy, Llanber, Llanfair to its junction with the B4573 road on the southern side of Harlech.
- (6) The Class II road B4573 on the southern side of Harlech in a north easterly direction to its junction with the Class I road A496.
- (7) The Class I road the A496 from its junction with the B4573 road in a north easterly direction to its junction with the A487 road near Maentwrog.
- (8) The A487 road from its junction with the A496 road in a north westerly direction to its junction with the Class II road B4410.
- (9) The B4410 from its junction with the A487 road in a north westerly direction to its junction with the Class I road the A4085 near Garreg.
- (10) The A4085 from its junction with the B4410 road in a north easterly direction then in a north westerly direction to its junction with the Class I road A498 near Nantmor.
- (11) The A498 from its junction with the A4085 road in a north easterly direction through Beddgelert to its junction with the Class I road the A4086 near the Pen y Gwryd Hotel, Pen y Pass, Llanberis and then along the A4086 road in a north easterly direction to the boundary of the County of Gwynedd. The race will then continue along roads through the County of Conway to its finish at Colwyn Bay.

The road closure will be carried out by the Police between these hours on a rolling basis as the event reaches each area.

The Order is necessary to enable the Wome’s Tour of Britain 2018 Cycling Event to take place. The Promoter of the Contest is Sweet Spot.

The Order will not have the effect of preventing at any time access for pedestrians to premises situated on or adjacent to any road to which the order relates, or to any premises only accessible to pedestrians from such a road.

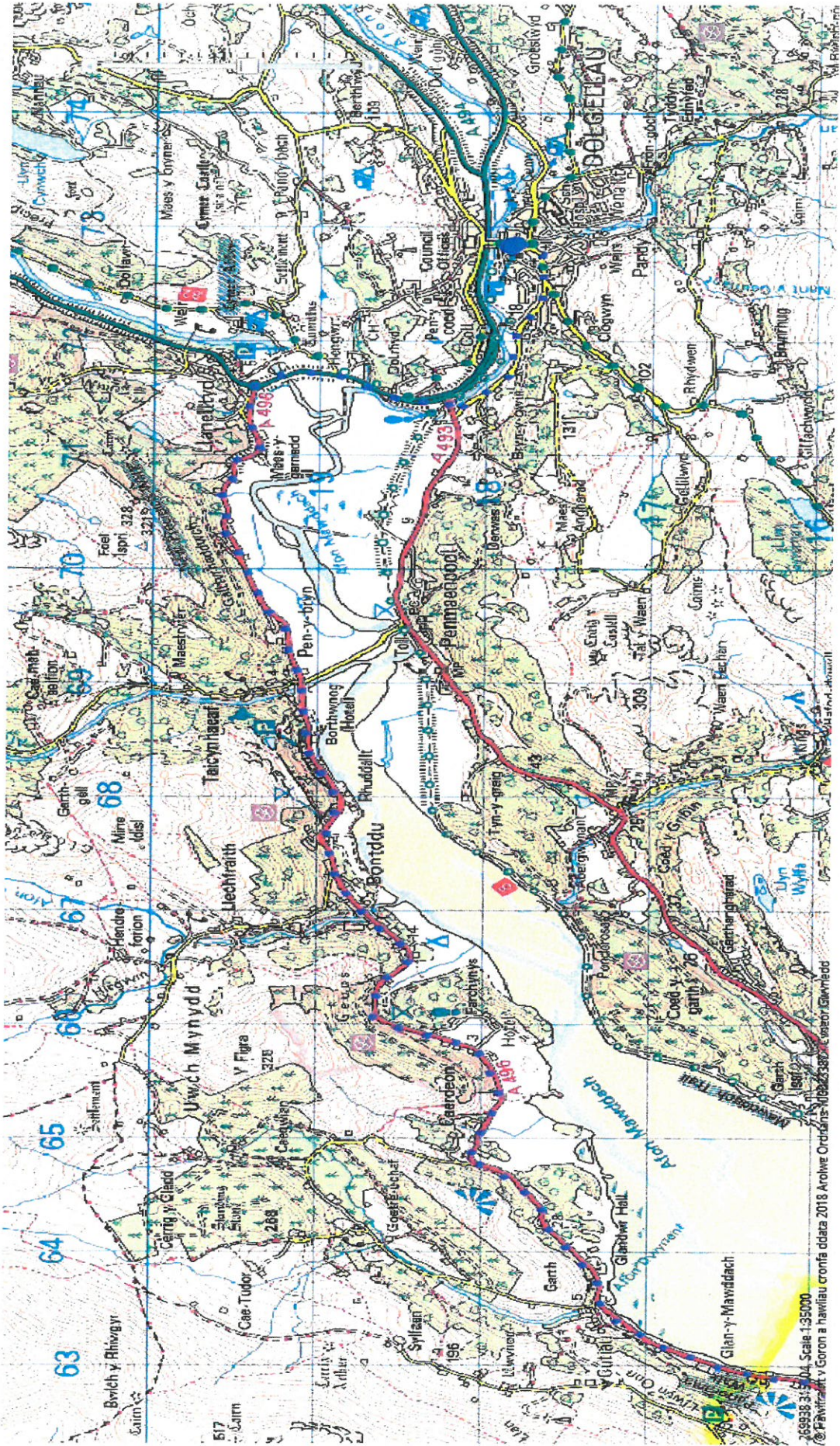
The Order comes into effect on Sunday the 17th June 2018 and will continue in force between 6.00 a.m. and 6.00 p.m.

DATED: 14th June, 2018.



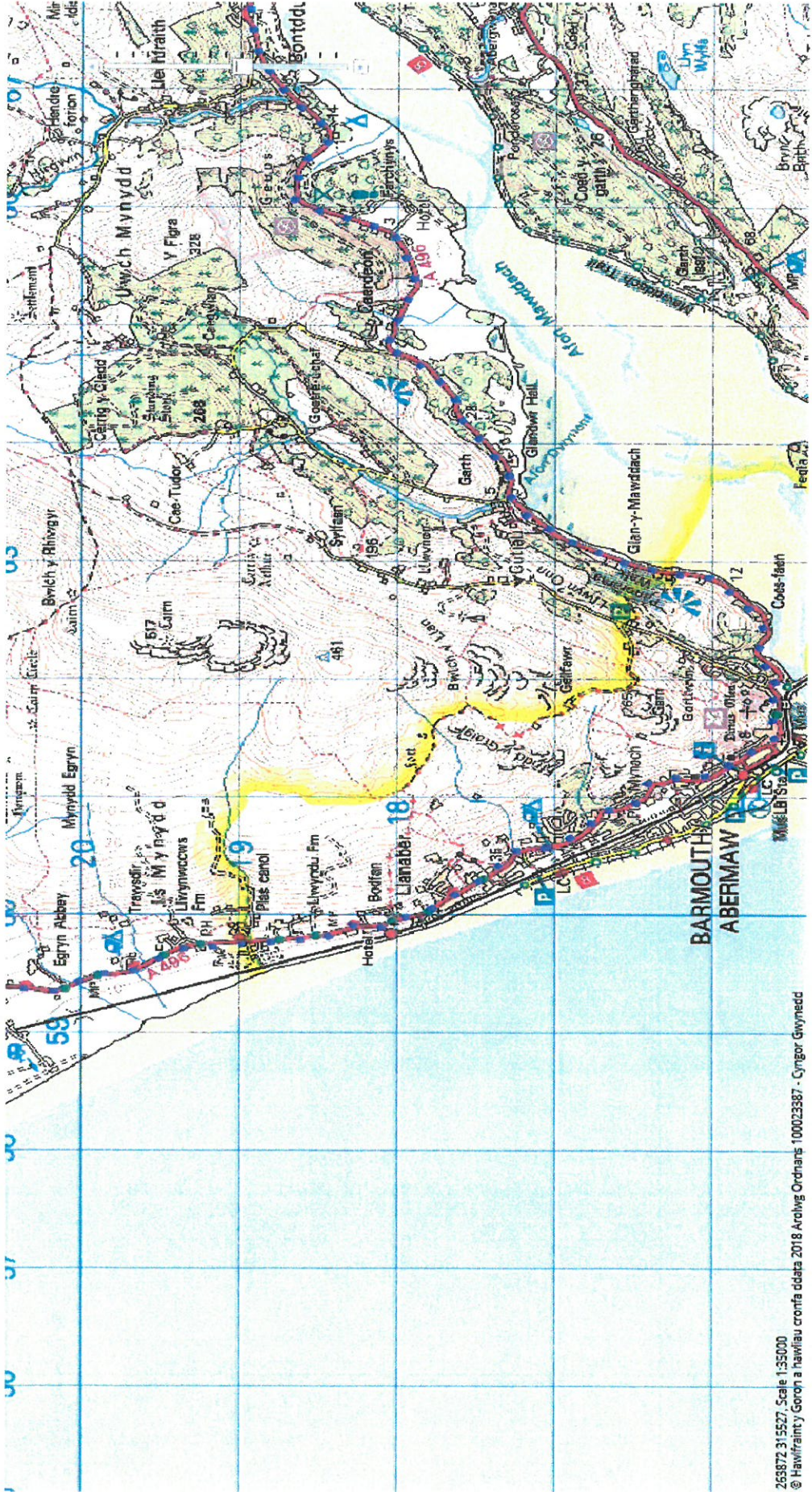
.....
Iwan G. D. Evans LLB(Hons) PGCert. Dip.L.G
Head of Legal Services,
Council Offices, Shirehall Street, CAERNARFON, Gwynedd.

For further information regarding the above please telephone the Transportation and Street Care Service on (01286) 679356 (CAT-3279 GT)

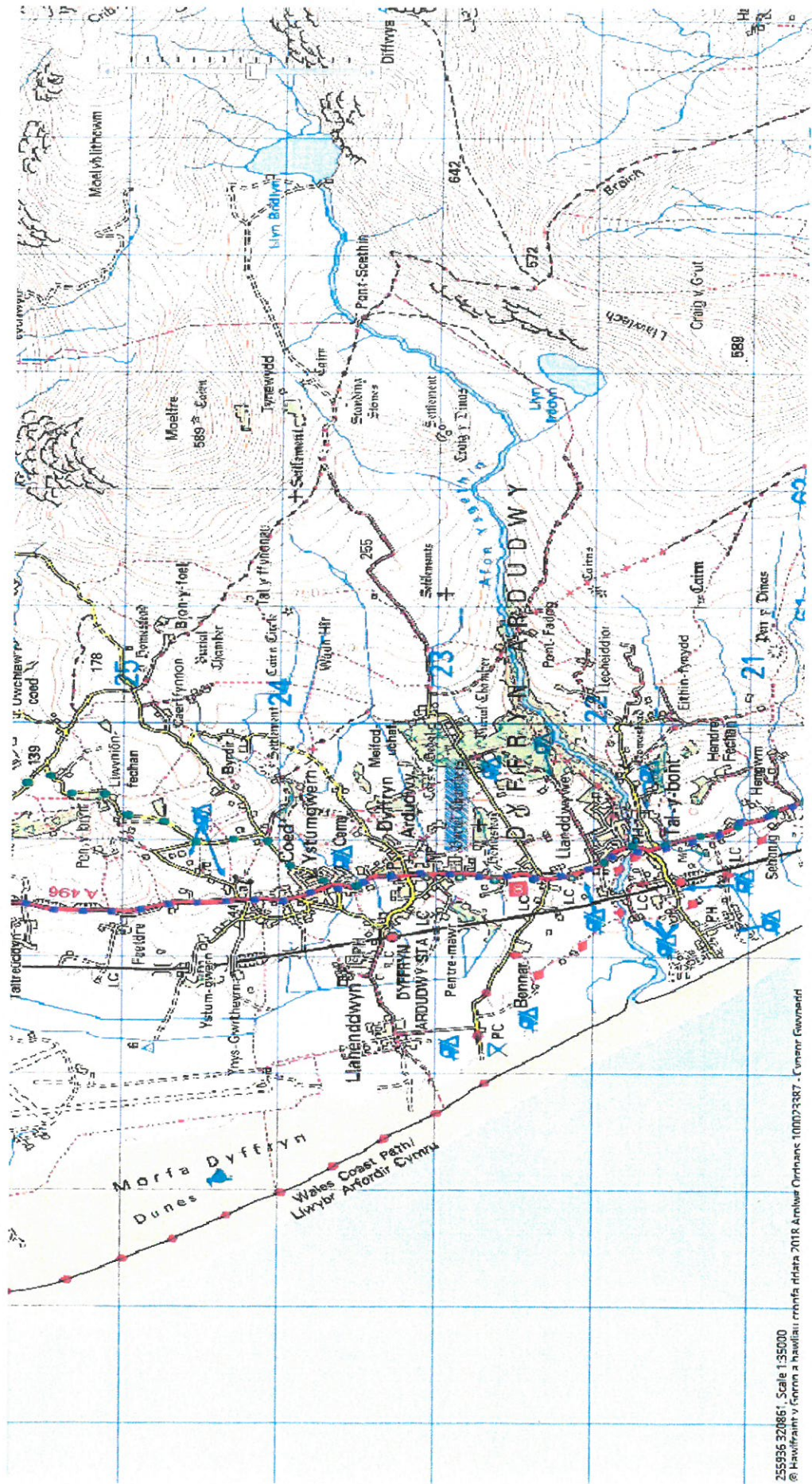


269938 31504 Scale 1:35000

© Ffynnon Iwan a hamliau cronfa ddata 2018 Arolwe Ordnans 10826388



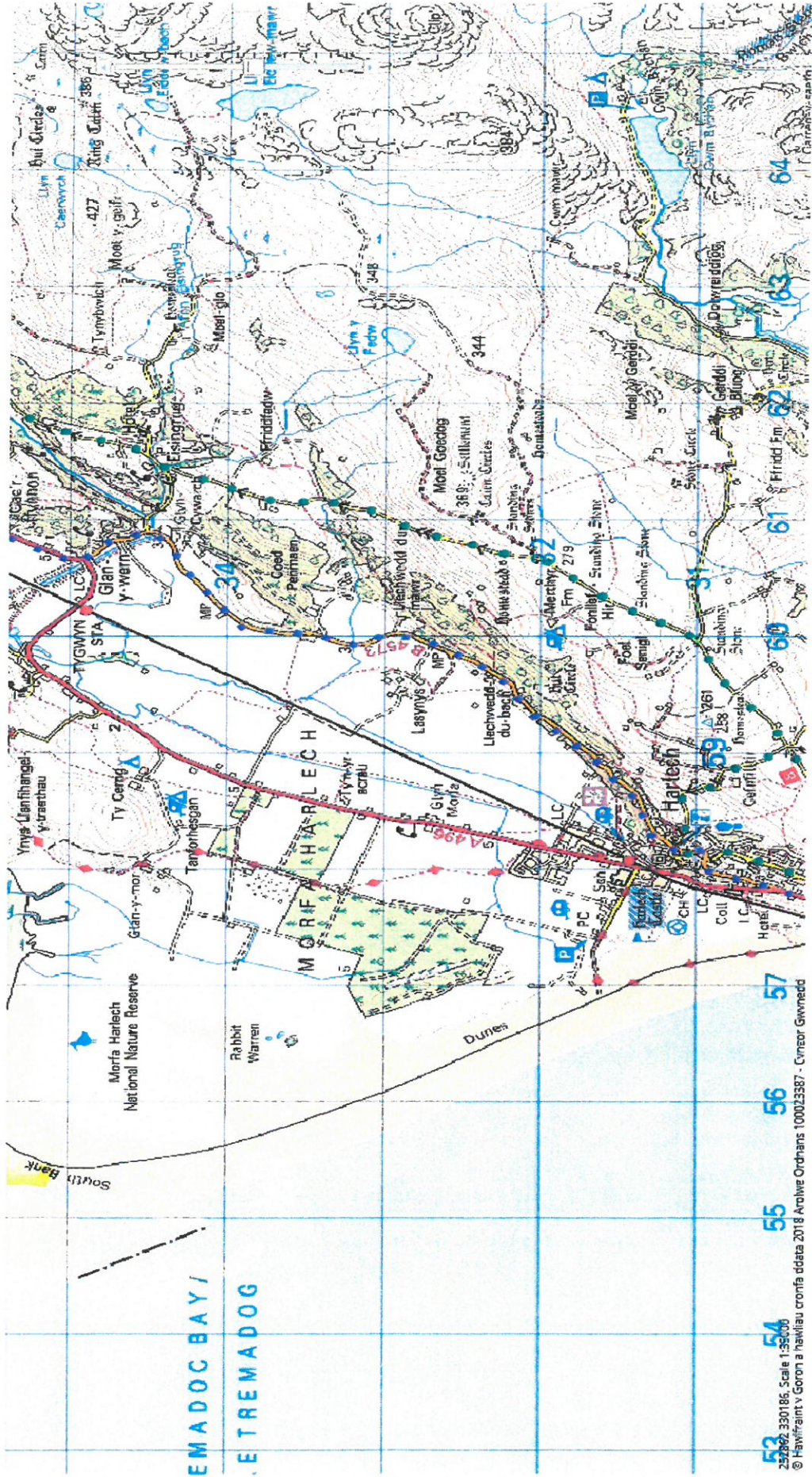
263872 315527 Scale 1:35000
 © Hawfrant y Goron a hawliau cronfa ddata 2018 Arrolwg Ordnans 100023387 - Cynsor Gwynedd



255936 320861, Scale 1:35000
 © Hawlfraim y Ffôn a hawliau cronfa ddata 2018. Amlyg Ordnans 100023487 - Cymran Fawrhaedd

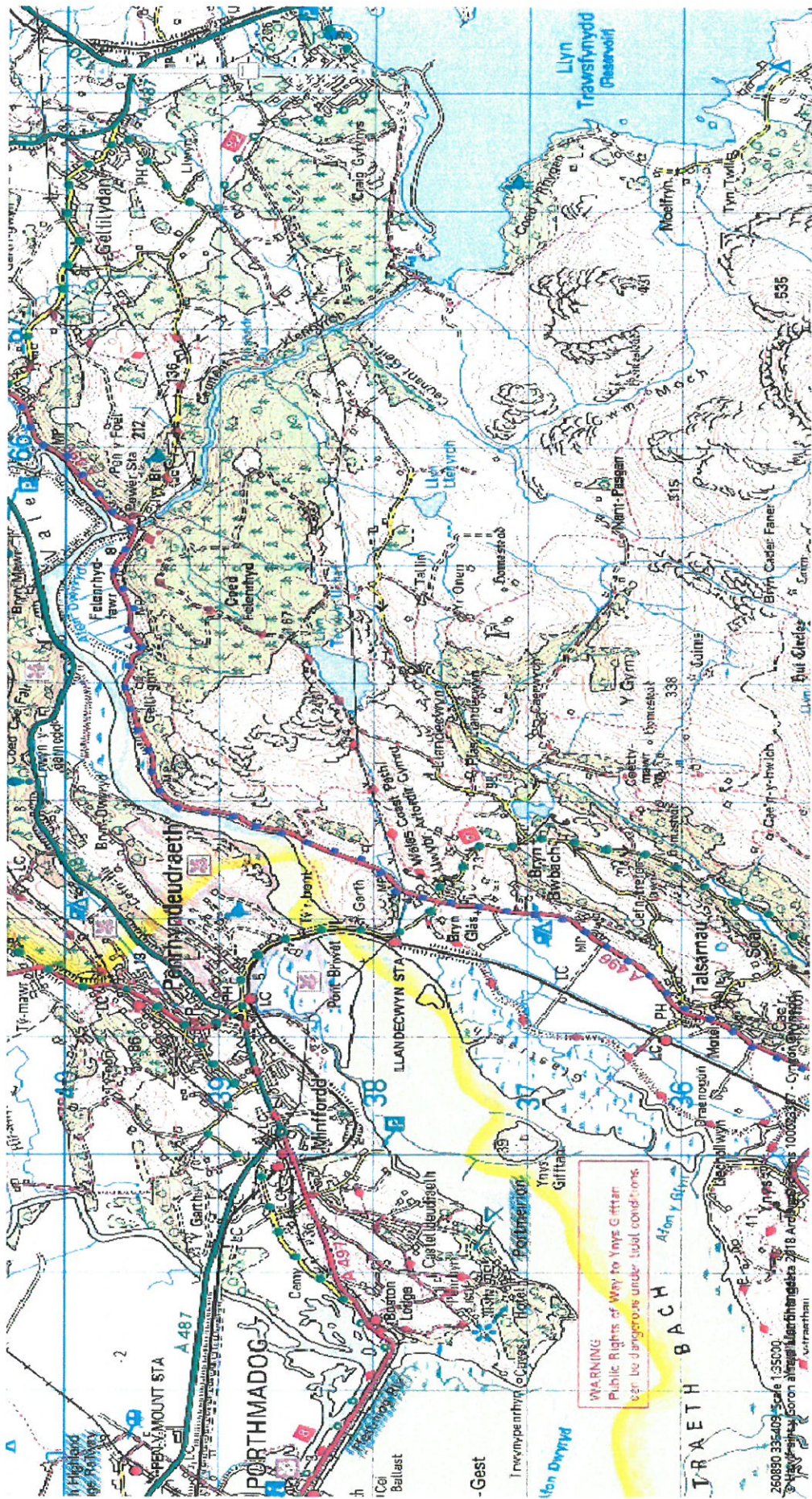


252213 325083, Scale 1:35000
 © Hawirainty Goron a hawiau cronfa data 2018 Arolwg Ordnans 100023387 - Cyfoeddi Gwynedd



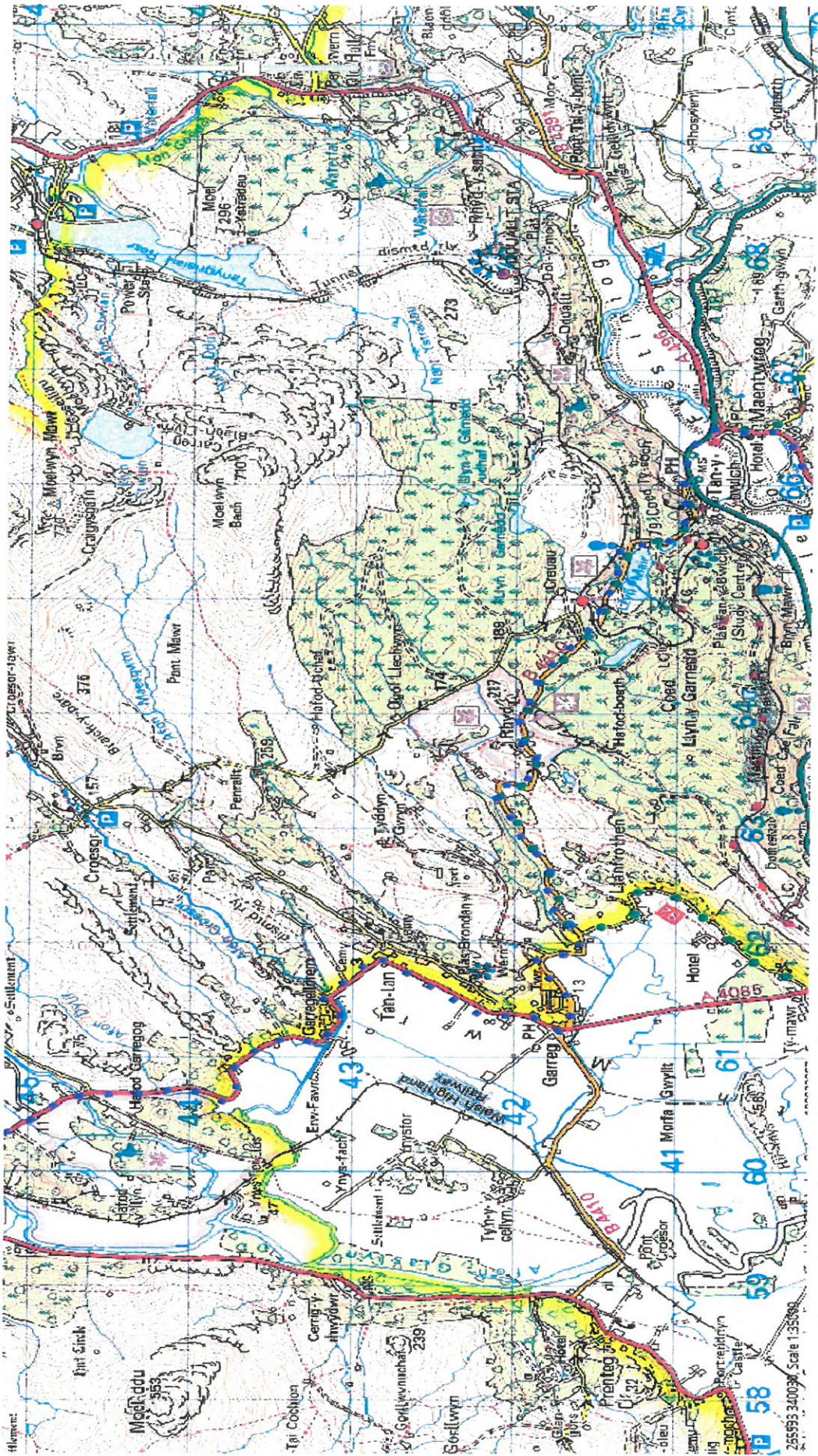
**EMADOC BAY /
E TREMADOG**

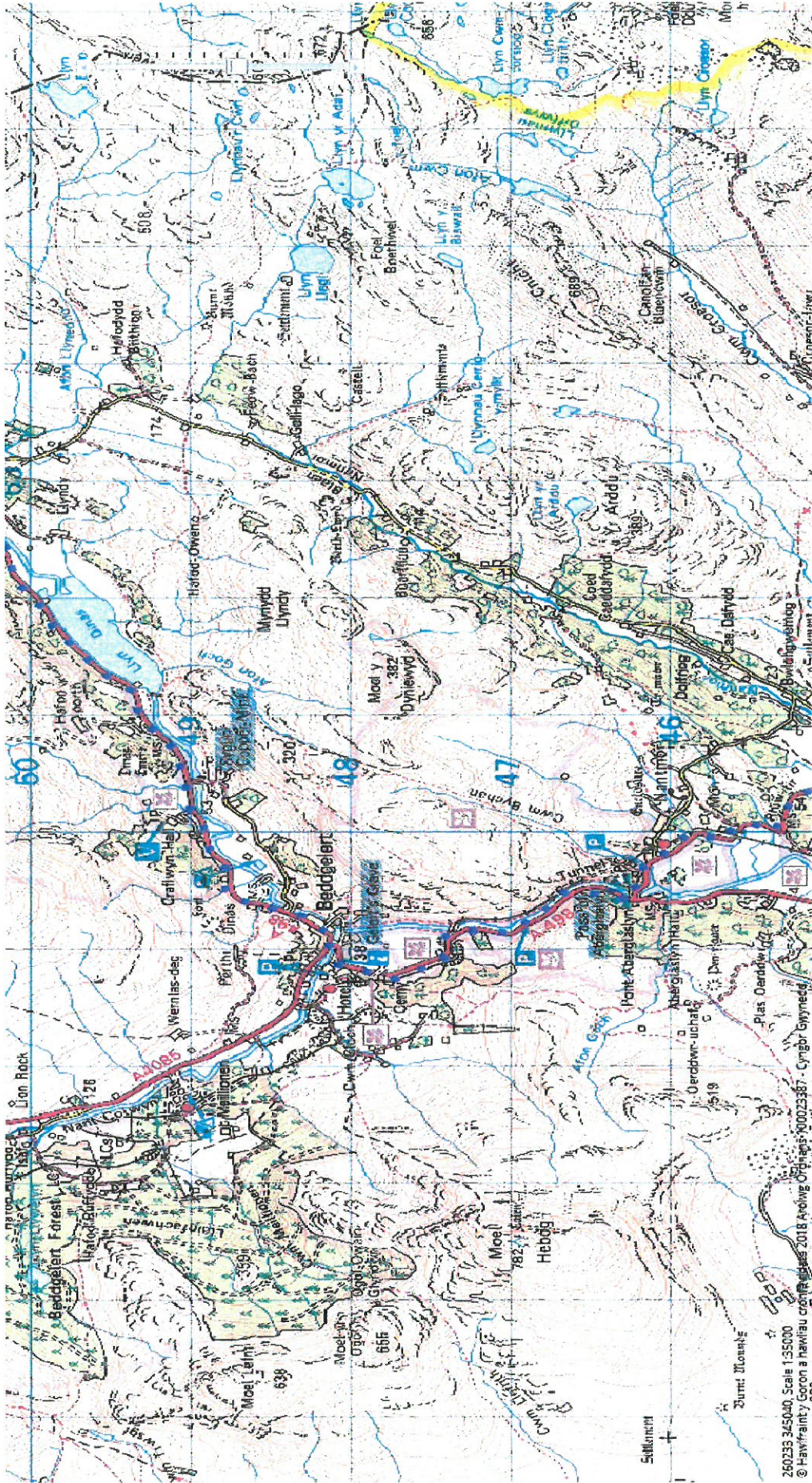
257862 330786, Scale 1:50,000
 © Hawframing Y Goron a hawliau cronfa ddata 2014 Arolwe Ordhans 100023387 - Cynsar Gwneadd



WARNING
Public Rights of Way to Ynys Giffar
can be dangerous under tidal conditions.

260830 335409 Scale 1:35,000
© Crown Copyright and Geomatics Great Britain 2018. All Rights Reserved. Ordnance Survey Licence No. 100023377 - Common Ordnance Licence





260233 345040 Scale 1:50000
 © Haw'rfainty Goron a hawliau cronfa 2018 Arolwg Ordnans A0023387 - Cynigr Gwynedd

